



Chrysocephalum semipapposum

Clustered Everlasting

Height:	0.3m - 1m
Width:	1m - 3m
Habit:	A variable dense aromatic perennial herb, erect stems produced from a creeping root system. Stems live for 2 years and may develop secondary stems in its second year.
Foliage:	Grey-green narrow sticky leaves 2-5cm long.
Flowers:	Showy bright-yellow papery flowers, densely clustered at the end of stems. Flowers from October to May.
Requirements:	Tolerates a range of conditions. Variable soils, moist to dry. Full or partial sun.
Cultivation & uses:	An attractive garden plant, great for cottage gardens, rockeries and mixed among native grasses. Frost tolerant, can be planted beneath trees, heavy pruning of old growth encourages new growth.

Local Distribution:

Map is indicative to the natural distribution of the species based on the best available knowledge.

The natural occurrence of this species is rare.

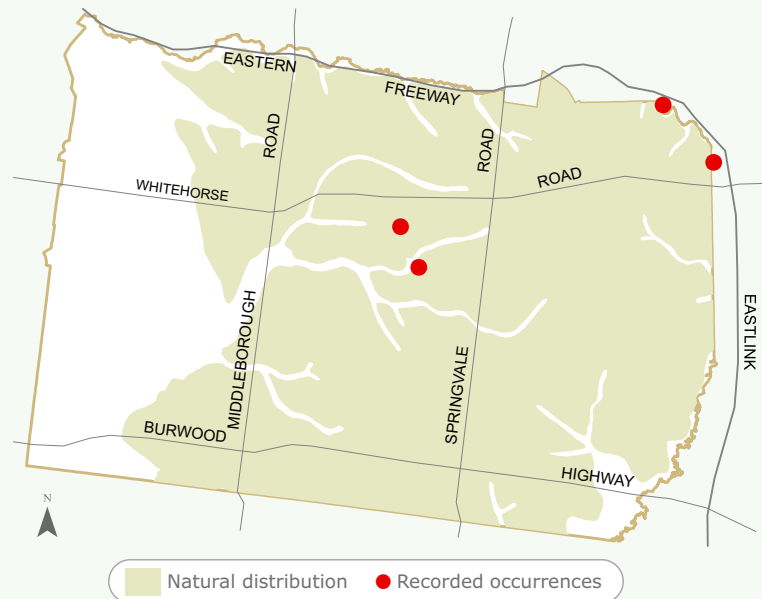


Image:

Photographer: Ian Moodie
'Clustered Everlasting'
Natural flora of Whitehorse



Having trouble sourcing this species?



For further information
contact ParksWide
Phone: (03) 9262 6222

For more information about Council services
and programs please phone 9262 6333 or visit
www.whitehorse.vic.gov.au

Copyright © Ian Moodie 2009