



# *Dichelachne crinita*

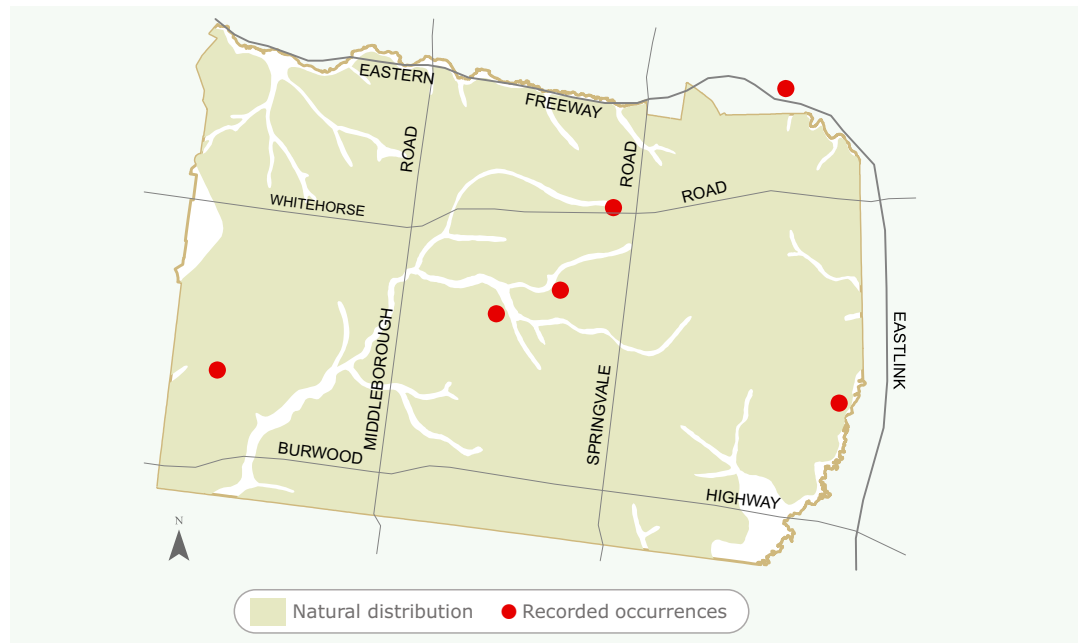
## Long-hair Plume Grass

<b>Height:</b>	10cm, stems up to 1m
<b>Width:</b>	30cm - 40cm
<b>Habit:</b>	Sparse open perennial tufting grass.
<b>Foliage:</b>	Flat, green to bluish-green leaves to 20cm long.
<b>Flowers:</b>	Cream coloured hairy flowerheads to 20cm long held on erect stems from October to December.
<b>Requirements:</b>	Well drained soils. Full or partial sun.
<b>Cultivation &amp; uses:</b>	A clumping and ornamental grass, effective in mass plantings. It may seed readily.

### Local Distribution:

Map is indicative to the natural distribution of the species based on the best available knowledge.

The natural occurrence of this species is infrequent.



### Image:

No image available.

Having trouble sourcing this species?



For further information  
contact ParksWide  
Phone: (03) 9262 6222

For more information about Council services  
and programs please phone 9262 6333 or visit  
[www.whitehorse.vic.gov.au](http://www.whitehorse.vic.gov.au)