



Juncus gregiflorus

Green Rush

Height:	0.5m - 1.4m
Width:	0.6m - 1.5m
Habit:	Tufted perennial rush spreading from underground stems.
Foliage:	Bright green shining stems with dark brown to dark reddish or purplish brown sheath-like leaves towards the base.
Flowers:	Clusters of pale brown flowers along stems from November to March.
Requirements:	Prefers moist soils, withstands periods of dryness and inundation. Partial sun.
Cultivation & uses:	Useful for around edges of water. Excellent habitat plant.

Local Distribution:

Map is indicative to the natural distribution of the species based on the best available knowledge.

The natural occurrence of this species is moderate.

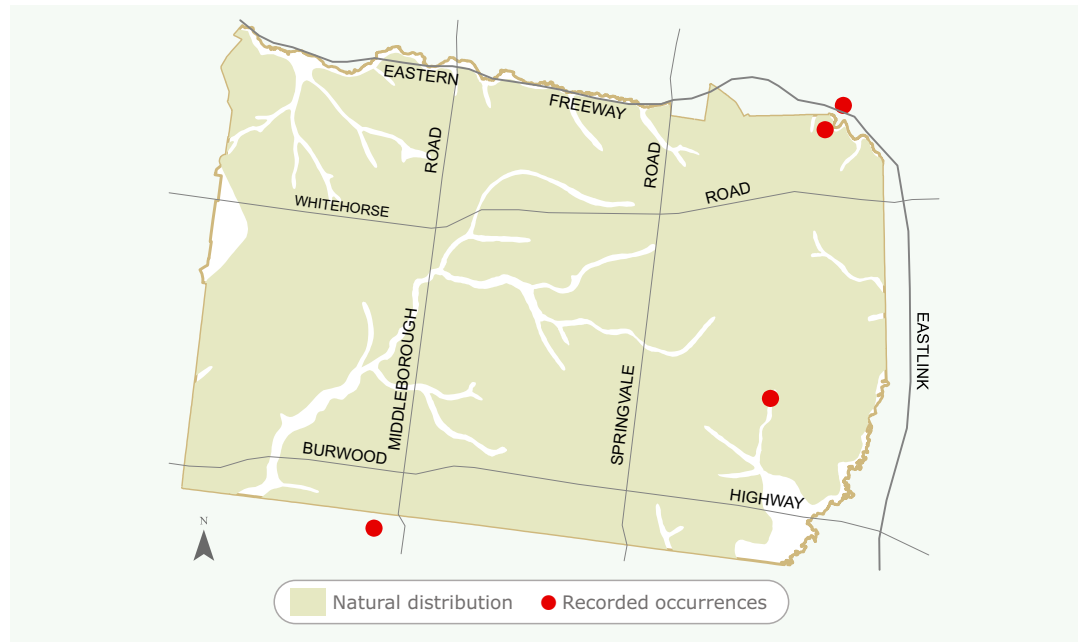


Image:

No image available.

Having trouble sourcing this species?



For further information
contact ParksWide
Phone: (03) 9262 6222

For more information about Council services
and programs please phone 9262 6333 or visit
www.whitehorse.vic.gov.au