



# *Pomaderris racemosa*

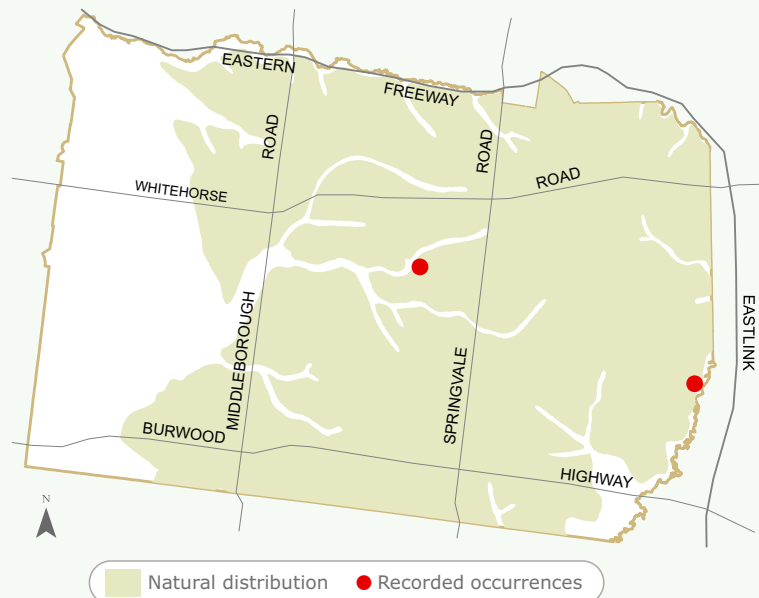
## Slender Pomaderris, Cluster Pomaderris

<b>Height:</b>	2m - 5m
<b>Width:</b>	1m - 2m
<b>Habit:</b>	Slender shrub or rarely, a small lightly branched tree.
<b>Foliage:</b>	Thin dark green egg-shaped leaves to 25mm long, pale green on the underside.
<b>Flowers:</b>	Clusters of small cream-yellow flowers from October to November. Petals absent.
<b>Requirements:</b>	Well drained soils. Will tolerate limited periods of dryness once established. Shade, full or partial sun.
<b>Cultivation &amp; uses:</b>	Ideal for planting in areas where space is limited due to its erect habit. Useful as a taller screening plant for beneath trees.

### Local Distribution:

Map is indicative to the natural distribution of the species based on the best available knowledge.

The natural occurrence of this species is infrequent.



### Image:

Photographer: Ian Moodie  
'Slender Pomaderris'  
Natural flora of Whitehorse



Having trouble sourcing this species?



For further information  
contact ParksWide  
Phone: (03) 9262 6222

For more information about Council services  
and programs please phone 9262 6333 or visit  
[www.whitehorse.vic.gov.au](http://www.whitehorse.vic.gov.au)

Copyright © Ian Moodie 2009