



Rubus parvifolius

Native Raspberry, Small-leaf Bramble

Height:	0.6m - 1m
Width:	0.5m - 2m
Habit:	Rambling small shrub to trailing plant covered in hooked thorns.
Foliage:	Bright green wrinkled toothed leaves to 6cm long, silvery on the underside.
Flowers:	Small deep pink flowers to 15mm wide from October to December, followed by small red berries that resemble raspberries in December to April.
Requirements:	Well drained soils. Shade or partial sun.
Cultivation & uses:	A hardy slender trailer which can be trained as a climber, similar to the Blackberry, but not as aggressive. Responds well to pruning which encourages increased flowering.

Local Distribution:

Map is indicative to the natural distribution of the species based on the best available knowledge.

The natural occurrence of this species is infrequent.

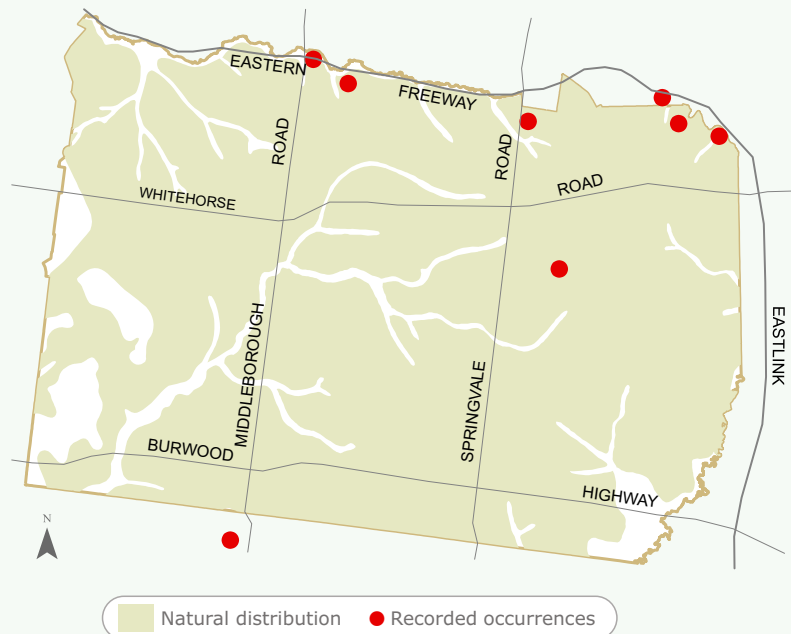


Image:

Photographer: Ormay, P., 1995
'*Rubus parvifolius*'



Ormay, P © Australian National Botanic Gardens

Having trouble sourcing this species?



For further information
contact ParksWide
Phone: (03) 9262 6222

For more information about Council services
and programs please phone 9262 6333 or visit
www.whitehorse.vic.gov.au